

# Sunday Morning Groups

## Children & Students

### 9:45

C-1	Infants	
C-2	1 year olds	
C-3	2 year olds	
C-5	3 year olds	
C-4	4 and 5 year olds	
C-6	Kindergarten	
<i>*Worship Care available at 11:00 for Infants - Kindergarteners</i>		
C-8	1st & 2nd Grade	
C-10	3rd & 4th Grade	
C-14	Club 56 - Fifth and Sixth Grade	
The Chapel	Youth (7th - 12th Grades)	

## Adults

### 8:30

A-16	Place of Grace Women's Group - Pam Jones	Women all ages
A-1	JOY Class - Richard Havens	Coed 60's - 70's
A-2	Coed Group - Kent Ringo/Roy Farmer/Dennis Fischer	Coed 60's - 70's
A-17/18	Empty Nesters - John & Pam McLerran/Brent Doty	Coed 60's - 70's
A-13/14	Coed Group - Tony Clines/Kenny Staas/Merrikay Shade	Coed 60's - 80's
A-10	Grace Women's Group - Judy Wilson	Women 60's - 80's
A-21/22	Adult 1 - Coed Group - James Head	70's & Better
A-19	Adult 1 - Men's Group - Homer Dale Cox / Jim Hare	
Office Conf Rm	Adult 1 - Ruth Women's Group - Sue Galloway	

### 9:45

A-16	Women's Group - Tammy Freedman	Women all ages
A-17/18	Rhodes - Johnny & Connie Rhodes	Coed Multi Gen
A-15	College Ages - Blake and Amanda Dotson	College Aged
A-12	Changed by Love - Amy Castello	Coed 20's - 30's
A-1	Breakfast Club - Mike & Tanya Puig	Coed 30's - 40's
A-13/14	CommUNITY Builders - David & Kelly Wren	Coed 40's
A-21/22	Middle Aged Parents - Garrett & Michele Mock	Coed 40's - 50's
A-2	Reid Group - Keith & Teresa Reid	Coed 40's - 60's
A-3	CIA/Christians in Action - Charlie Castello	Coed 40's - 70's
A-9/10	The Vineyard - Brad & Sharon Blanchard	Coed 50's - 70's

### ####

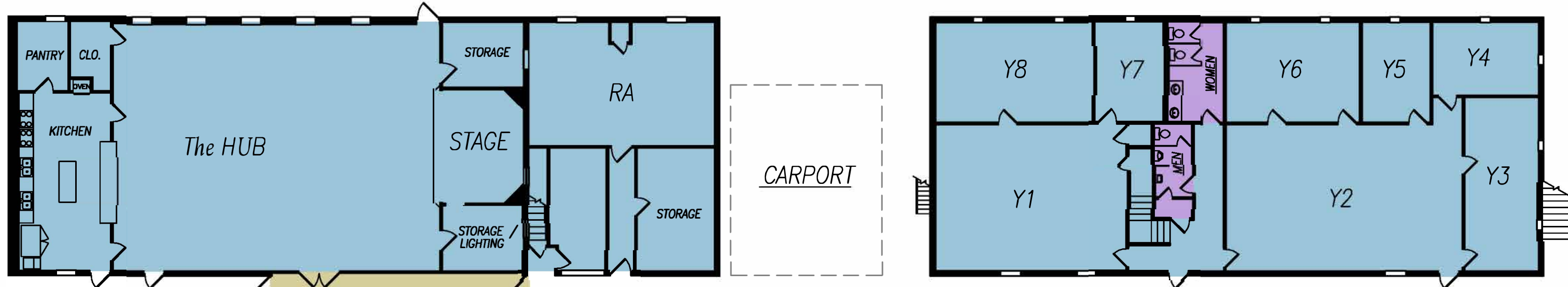
A-1	Harmony Group - DF and Sara Barrett	Coed 60's - 80's
	<i>Looking to start a new group here. Stay tuned!</i>	

REV 8-2024



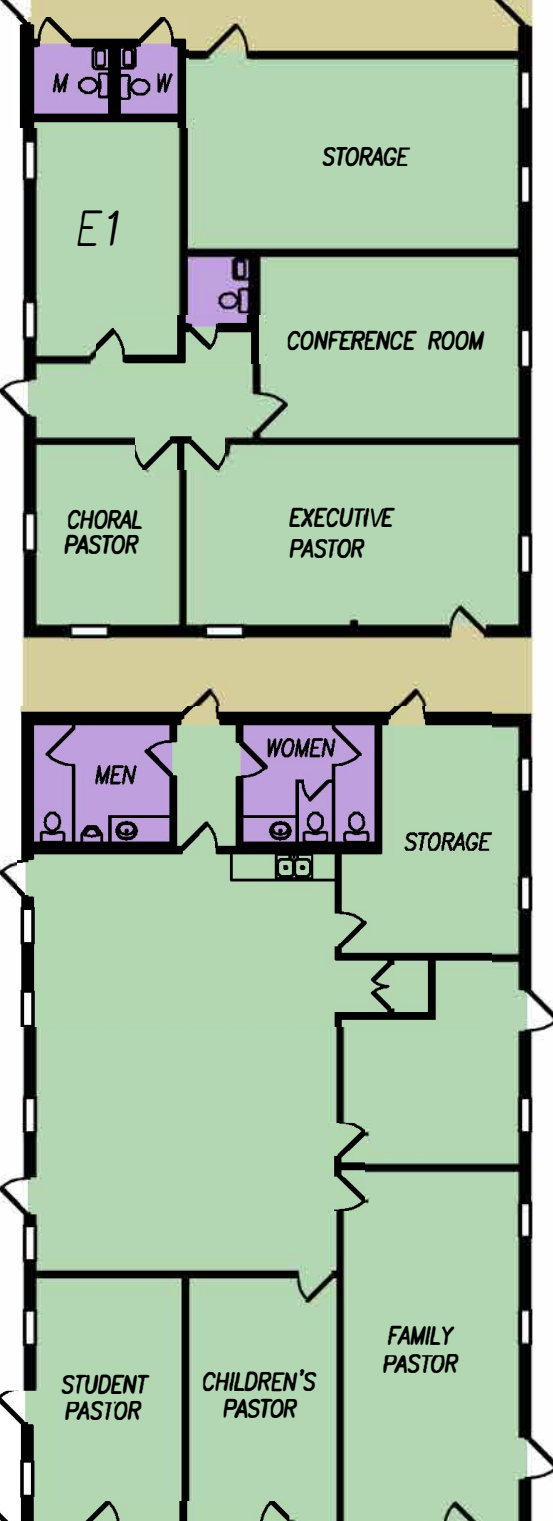
**MEADOWBROOK**  
BAPTIST CHURCH

**YOUTH**

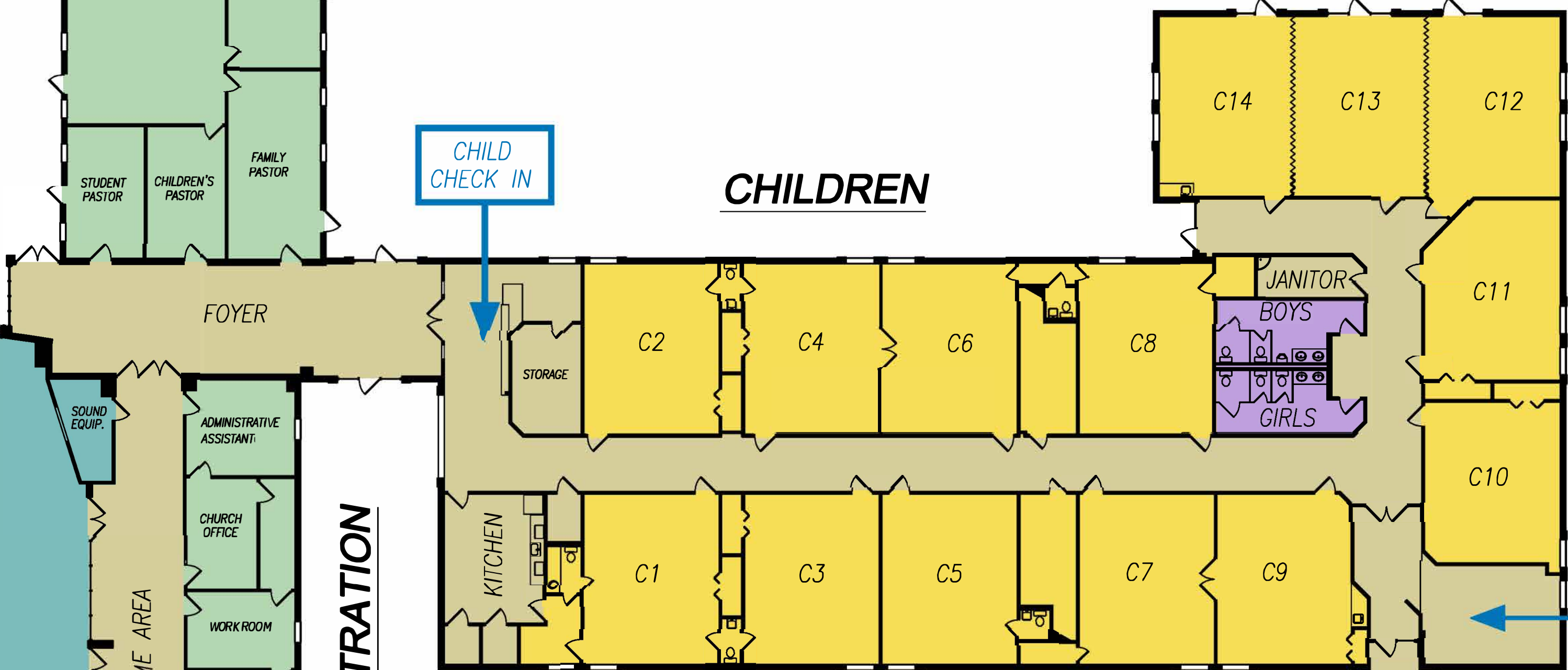


- = Youth
- = Administration
- = Children
- = Adult
- = Worship Center
- = Common Area
- = YOUTH
- = Kitchen
- = Restrooms

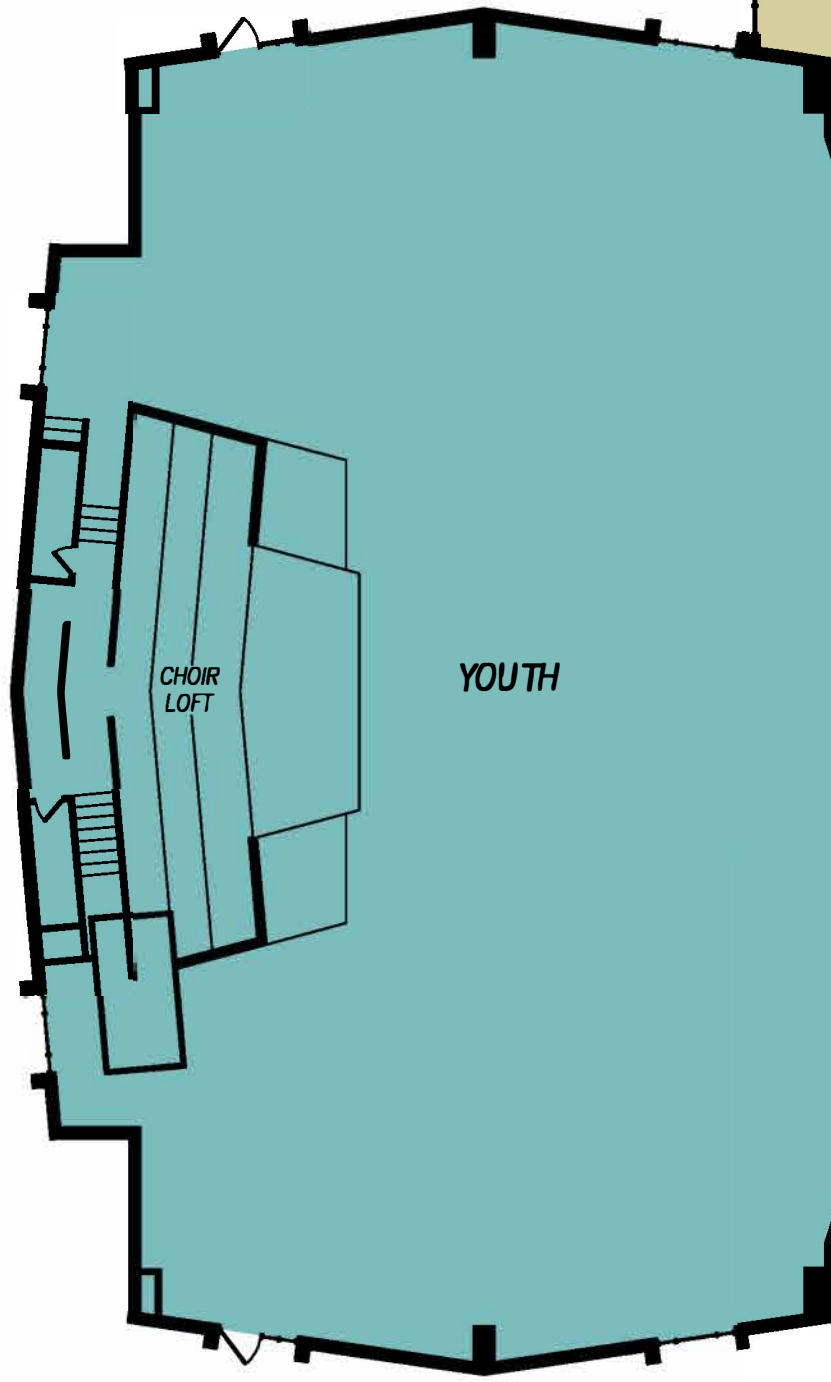
**ADMINISTRATION**



**CHILDREN**



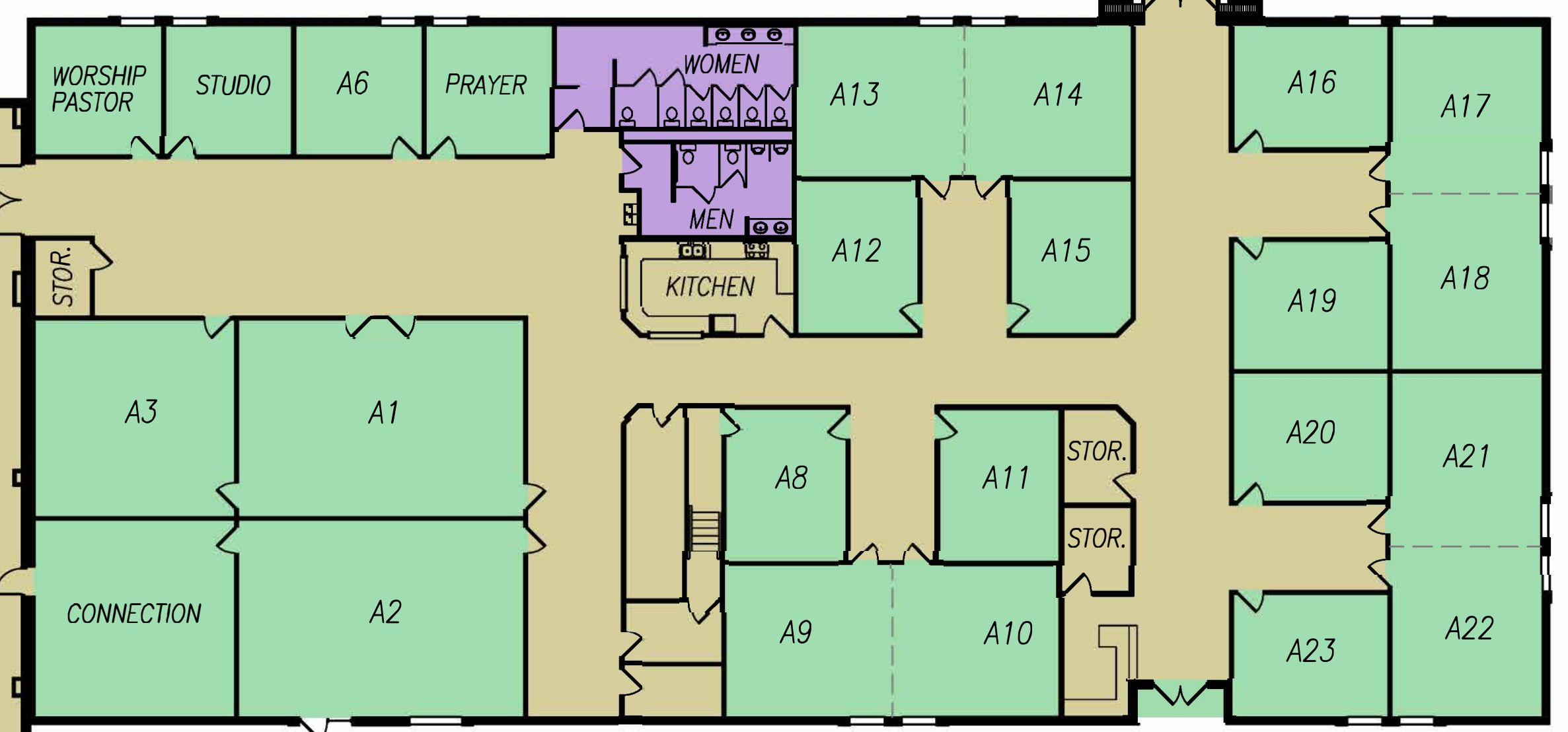
**CHAPEL**



**Courtyard**

**Education Entrance**

**ADMINISTRATION**



**ADULTS**

**Main Entrance**

**WORSHIP CENTER**

